

Getting to the ACE Training Centre

**33 Nancy Ellis Leebold Drive
Bankstown Airport
NSW 2200
Australia**

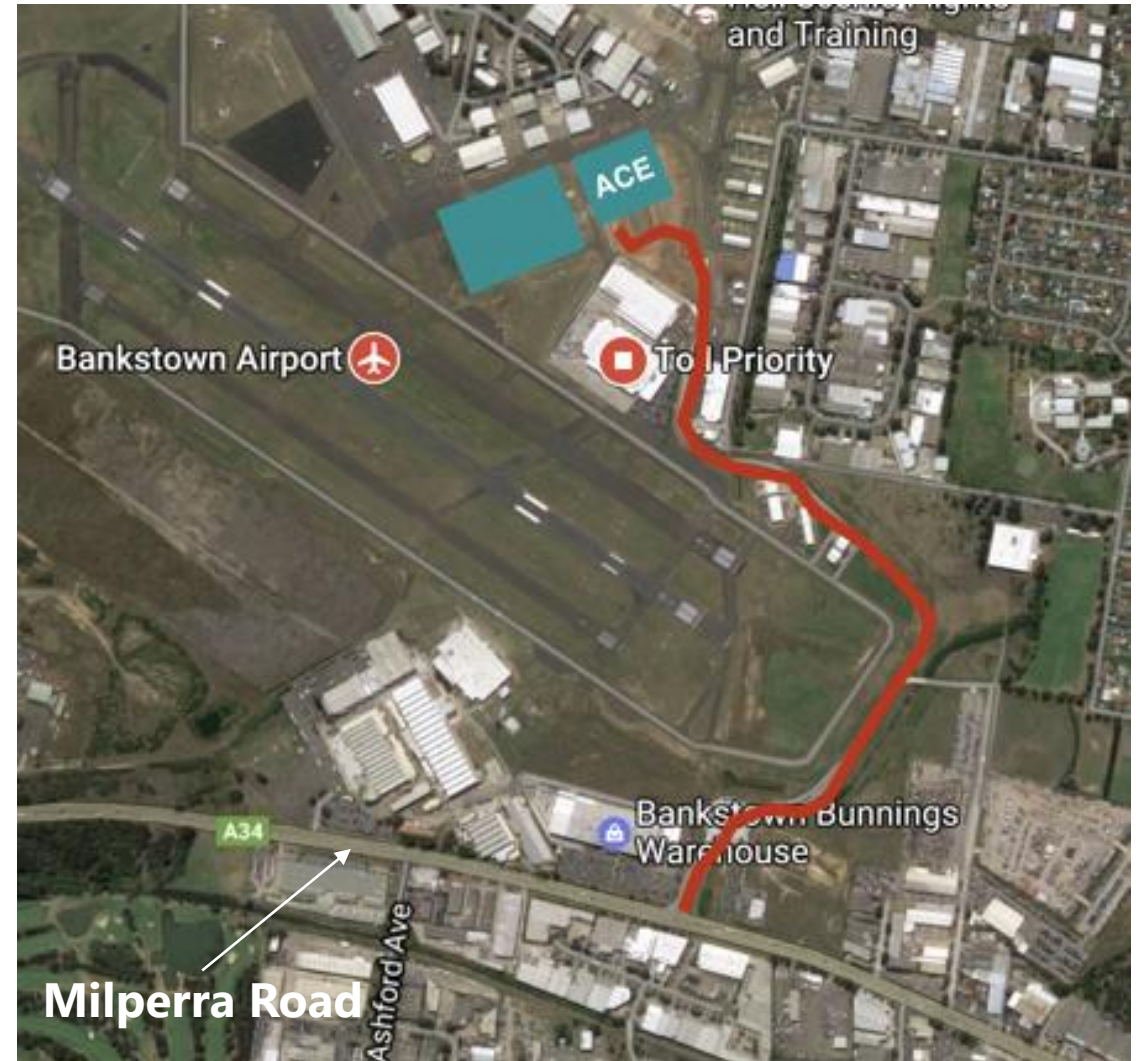
From the Milperra Road in Revesby, turn North into the airport between Bunnings and McDonalds. Take the second exit at the mini roundabout and continue to the end of the road where the Toll NSW Ambulance base is.

The ACE Training Centre is well signed and is located to the right of the Operations building.

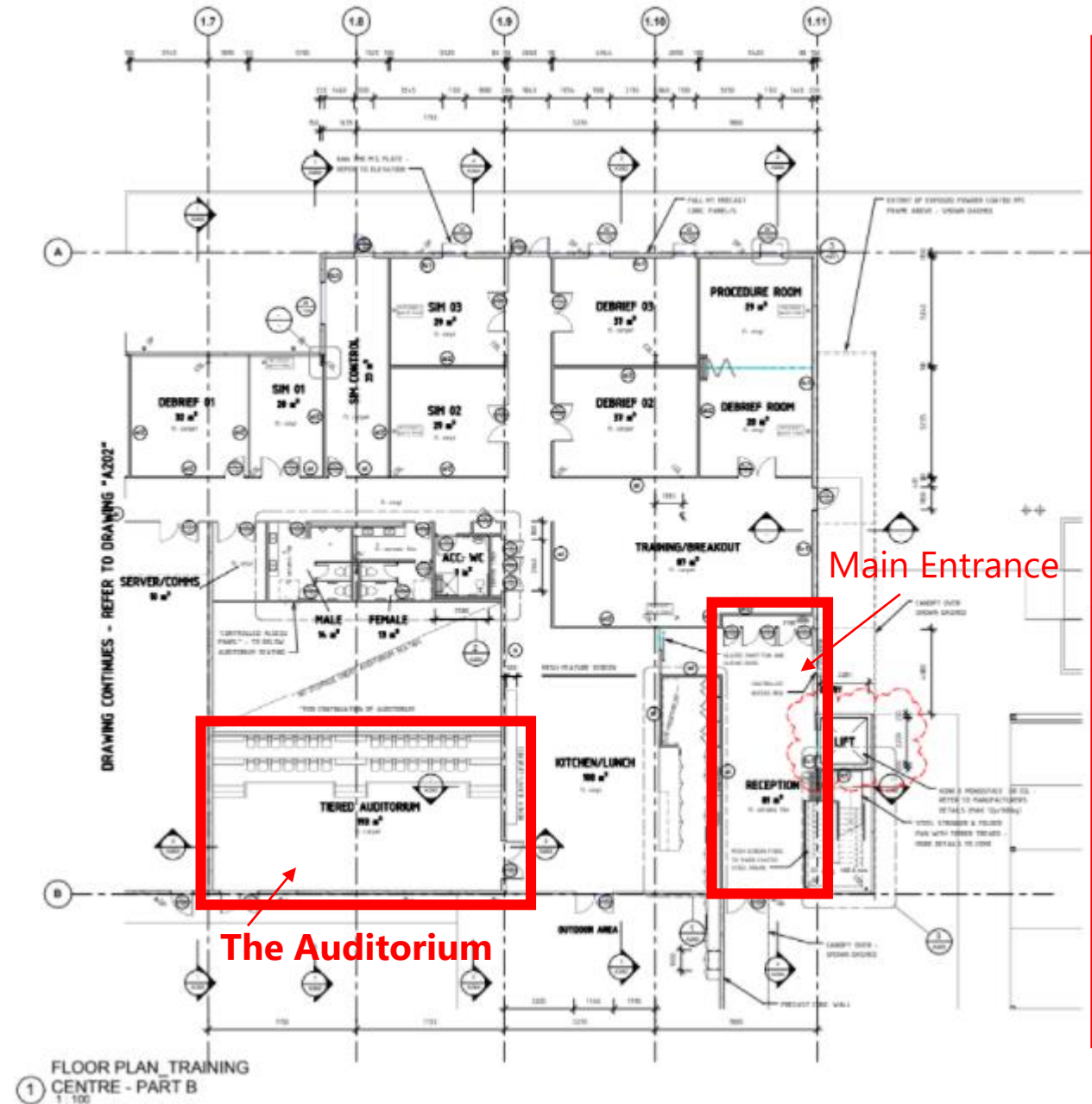
Please park with front of vehicle facing out (rear in to curb).



NSW Ambulance



The ACE Training Centre Auditorium





Safety Induction

- You are on an operational Aeromedical Rescue Helicopter Base
- No smoking permitted on site
- No alcohol can be consumed on site
- No food or drinks other than water in the auditorium
- Bathrooms located on the ground floor
- Respect the courtyard and memorial garden area
- Please at no time access airside, the simulator rooms or HUET Theatre
- COVID Mitigations are in place on site, Surgical Masks **MUST** be worn at all times. Rapid Antigen Testing is in place prior entry

Emergency Evacuation

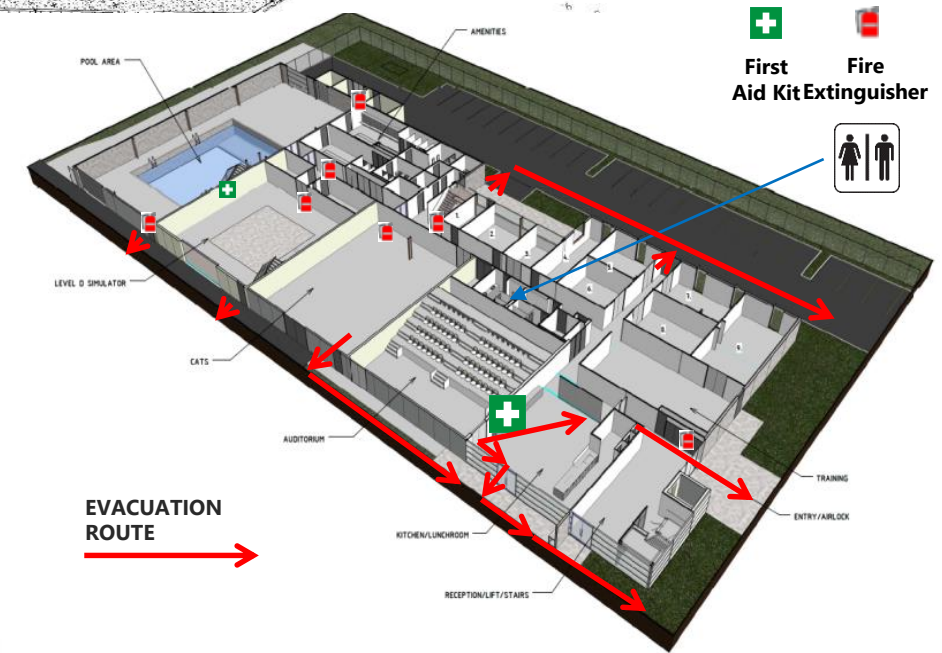
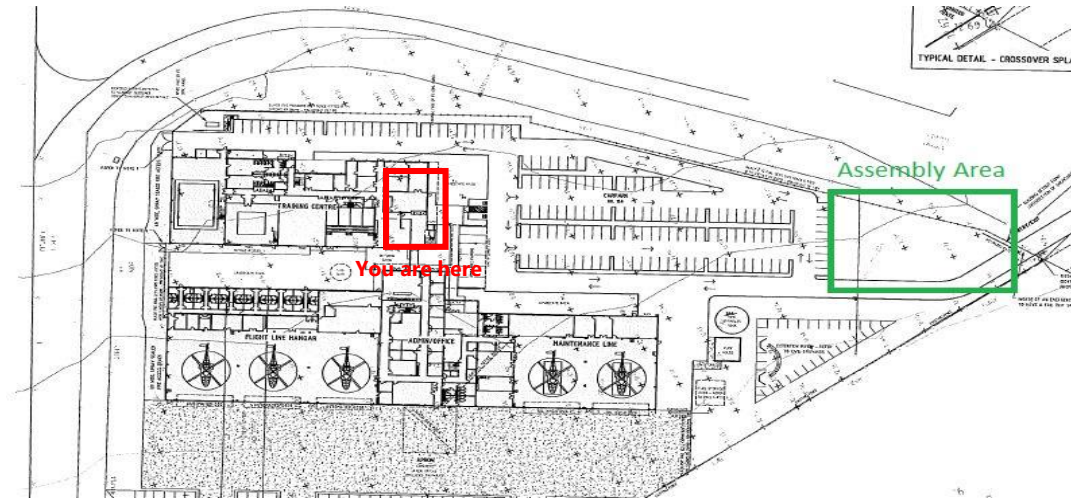
In the event of an emergency occurring the Occupant Warning System will sound and you will hear the following alert tones:

ALERT TONE – “Beep Beep”

EVACUATION TONE – “Whoop Whoop”

Upon hearing the Emergency Evacuation Tones, or on the direction of a Warden, proceed quickly and orderly, to the closest safest Emergency Exit Door and then proceed **to EVACUATION MUSTER AREA.**

Ring **000** in an emergency.



Visitors on Site

Parking and Speed Limits

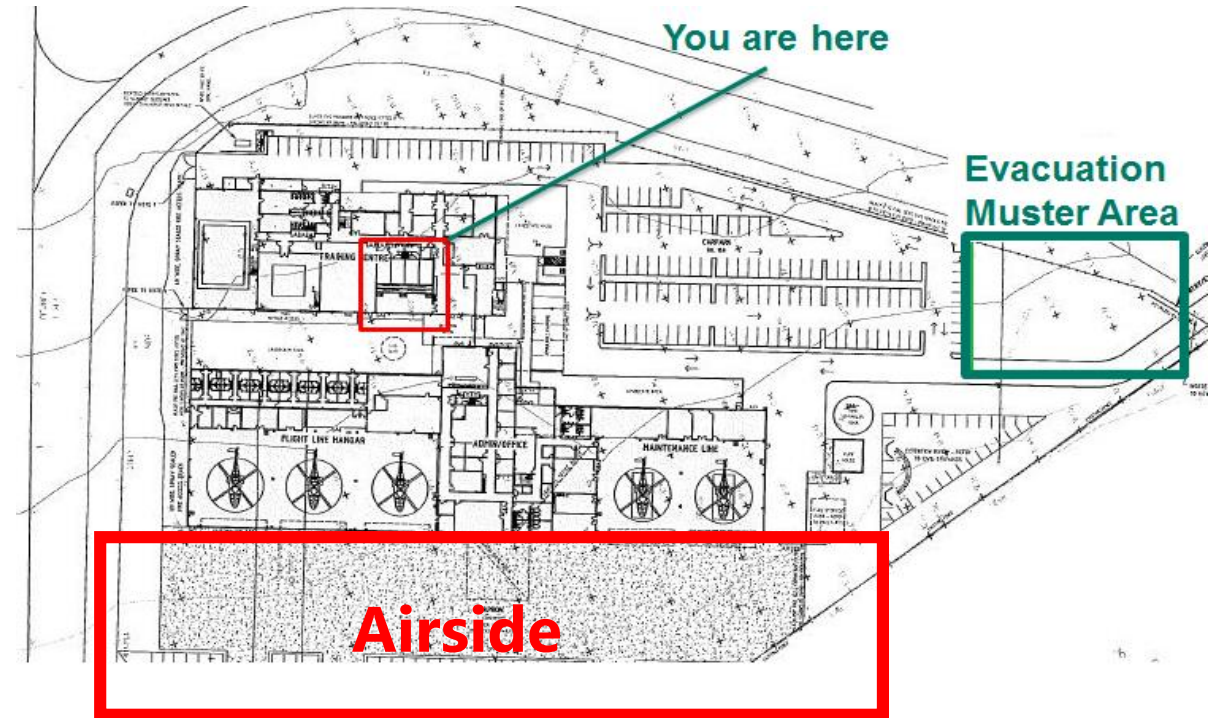
Please follow all traffic signs. Traffic flow is anti-clockwise and reverse parking is requested. Give way to all Ambulance vehicles

Safety Reporting

Please report any hazards, near misses or injuries to a Toll employee. If you see something wrong or a potential incident – Please say something at the time and report later!

Drugs and alcohol

NSWA/Toll Helicopters has a zero tolerance to drugs and alcohol on site



Hazard areas

- Airside areas, hangars, pool and simulator areas
- No access to these areas unless accompanied by a Toll or NSW Aeromedical representative