

Frontline roles in each paramedic service

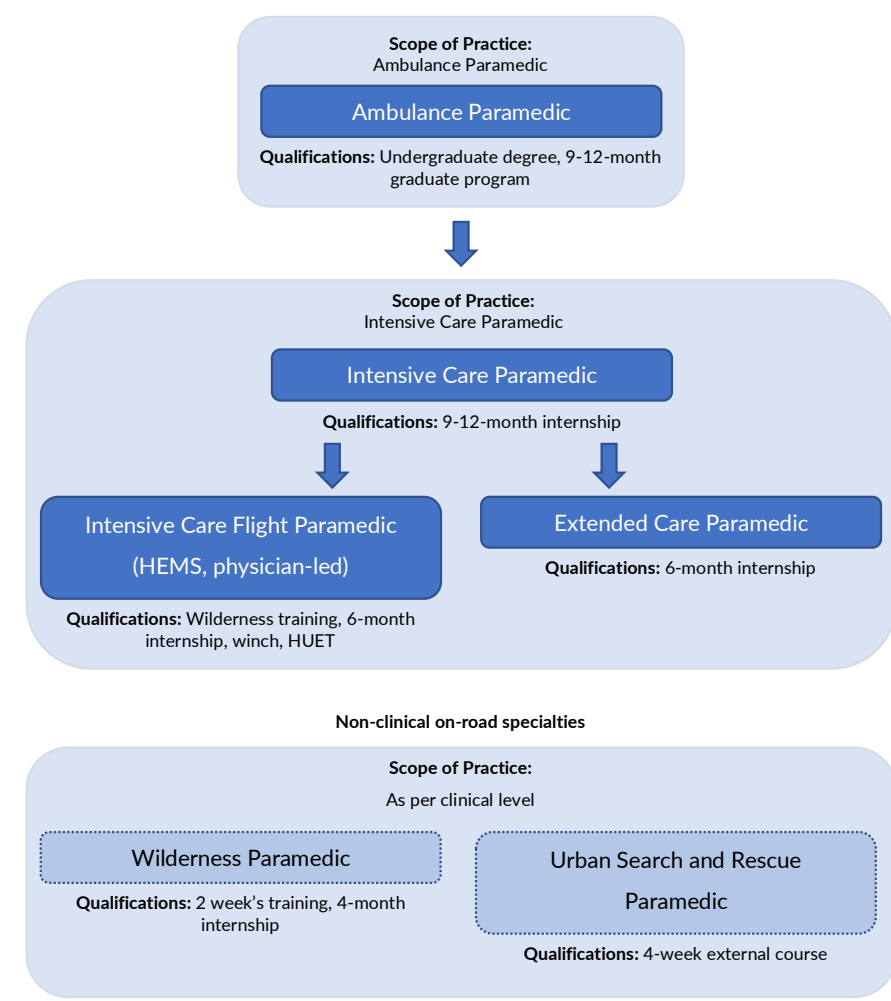
How well do you know your neighbours?

Scope of practice

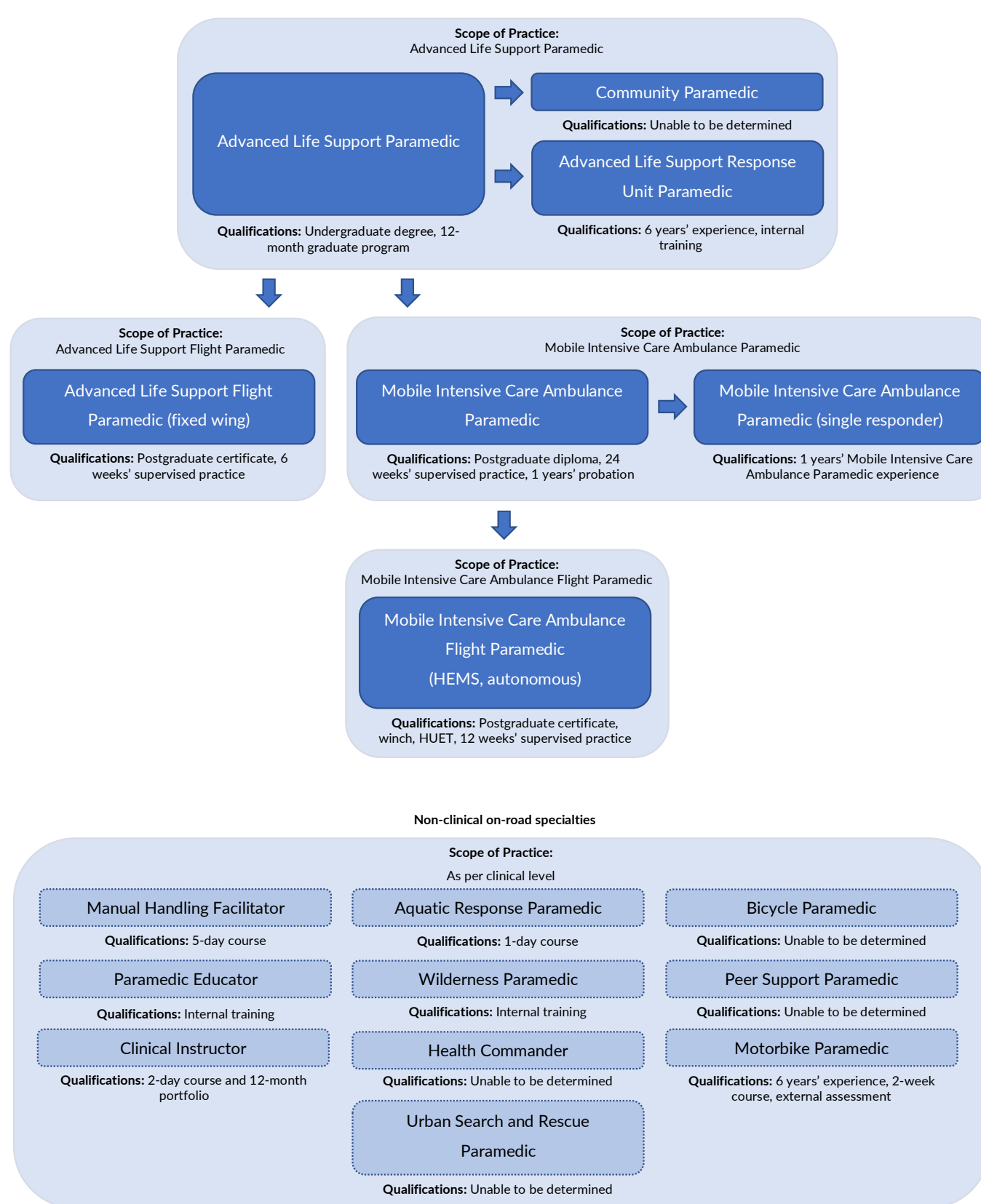
Role

Non-clinical speciality

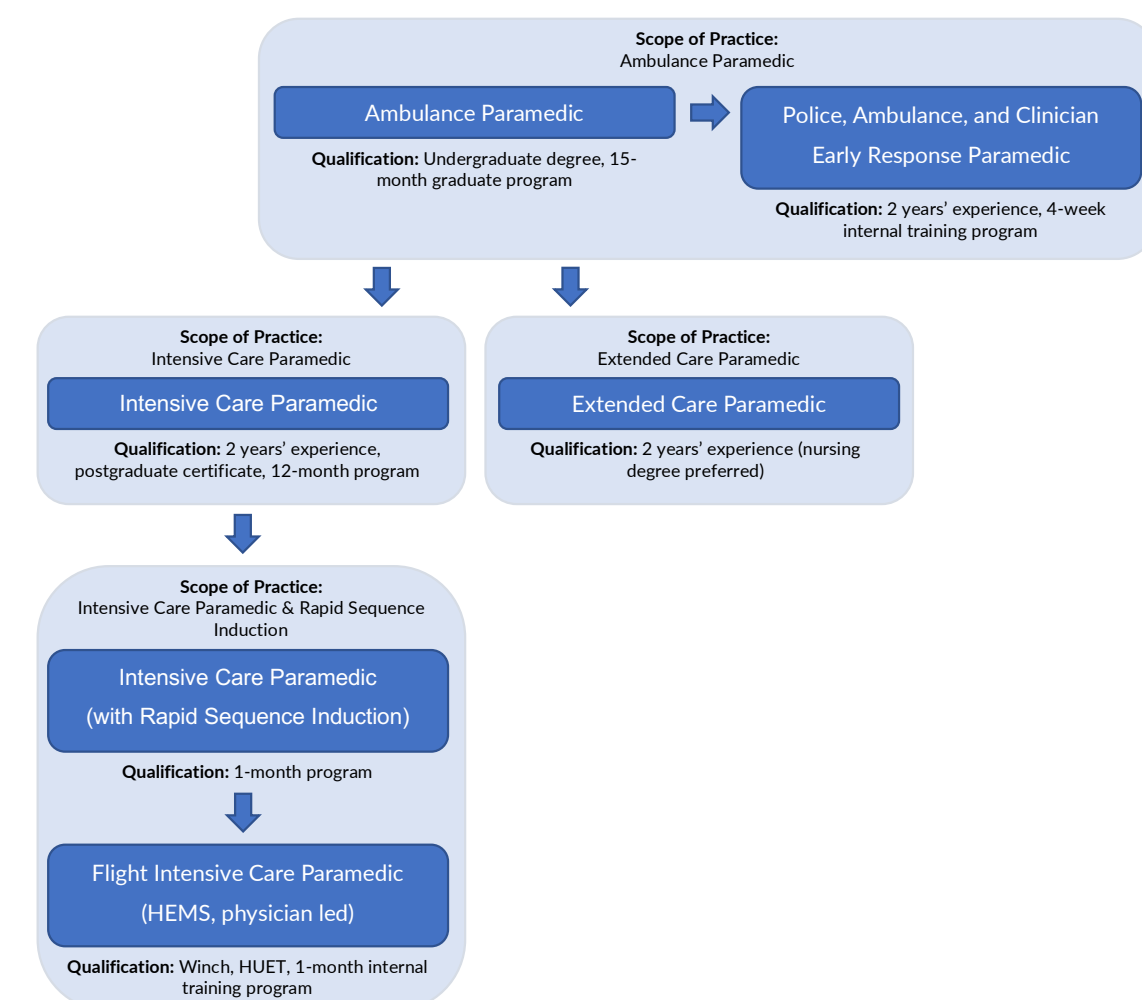
Ambulance Tasmania



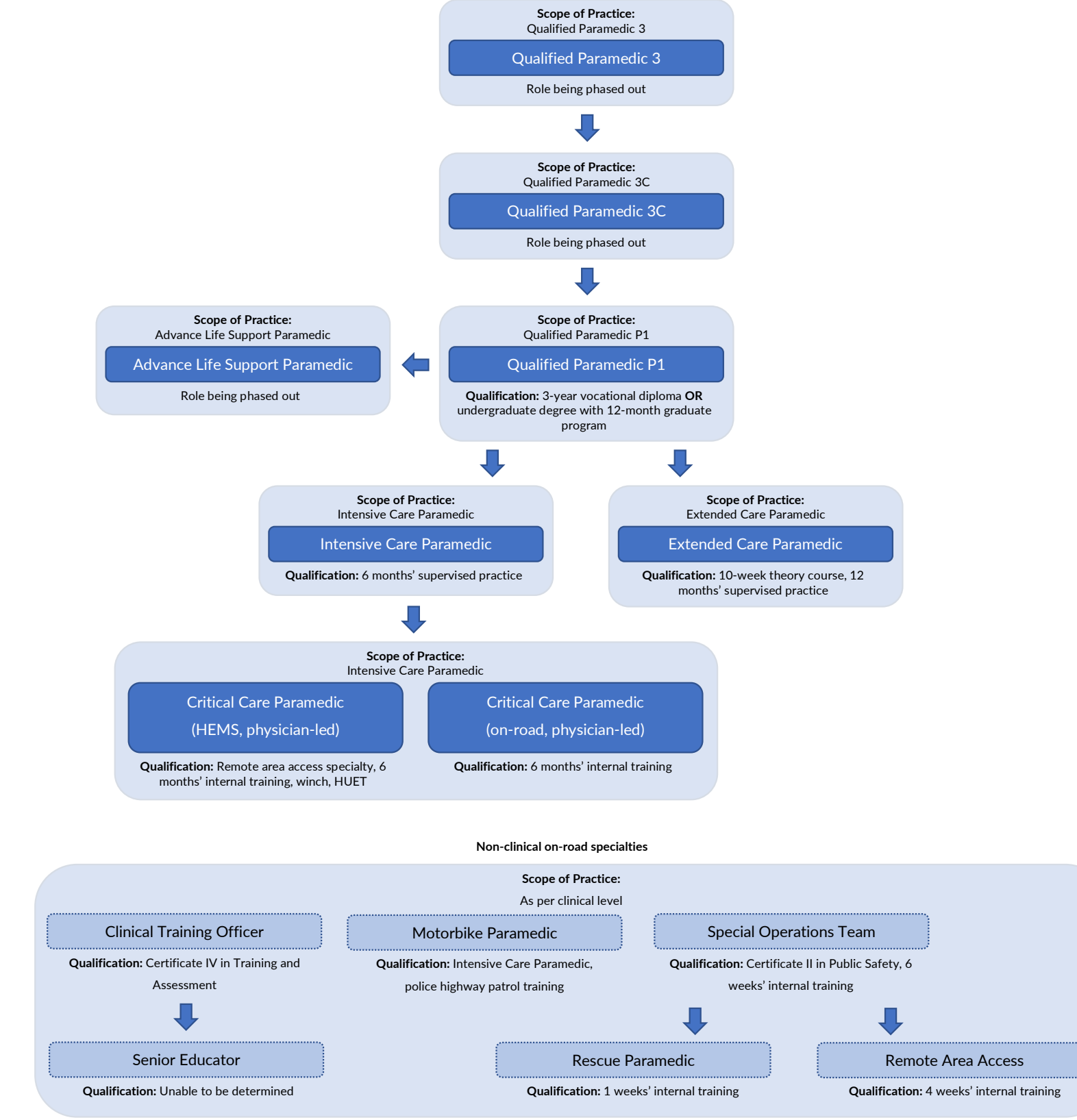
Ambulance Victoria



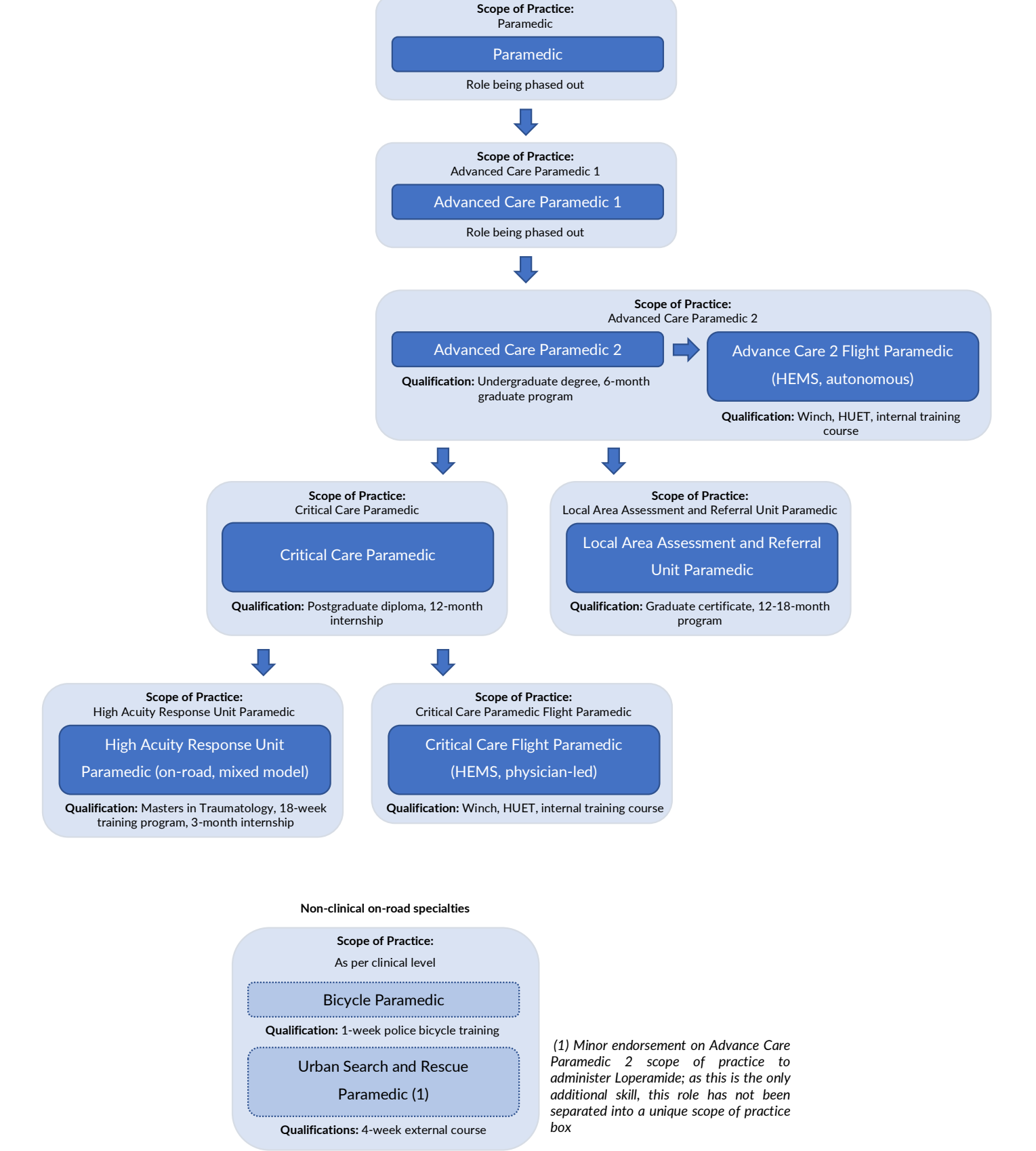
Australian Capital Territory Ambulance Service



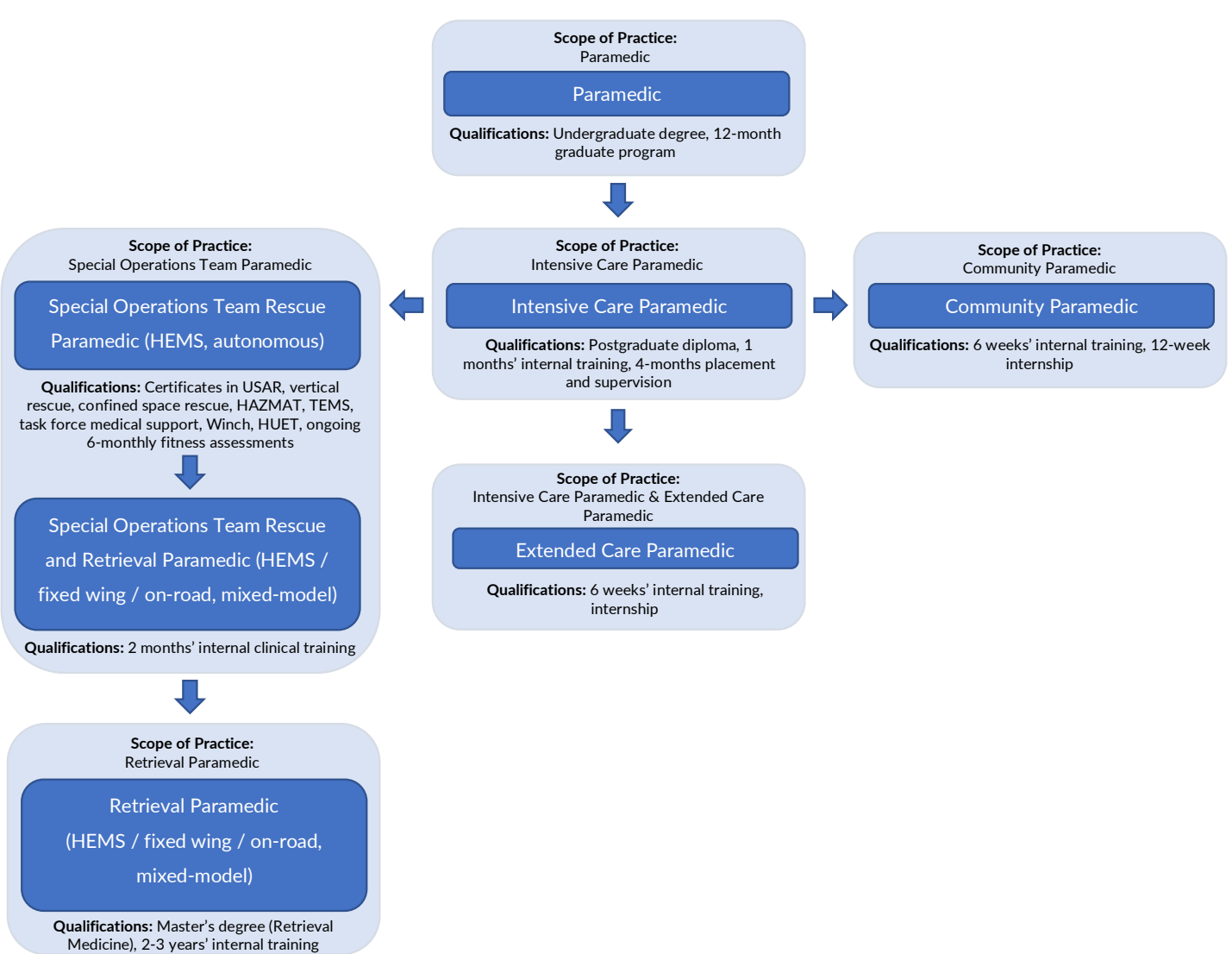
New South Wales Ambulance



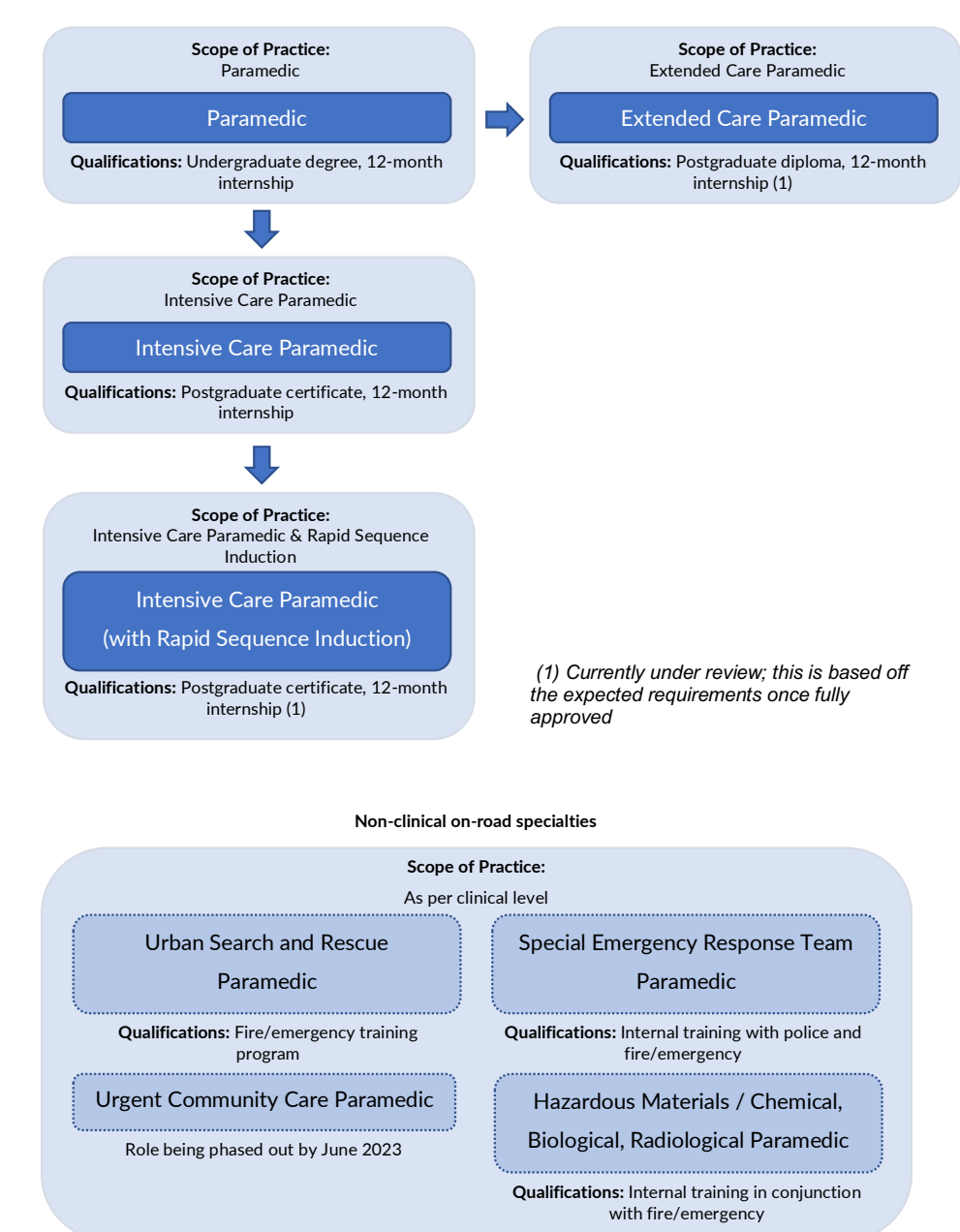
Queensland Ambulance Service



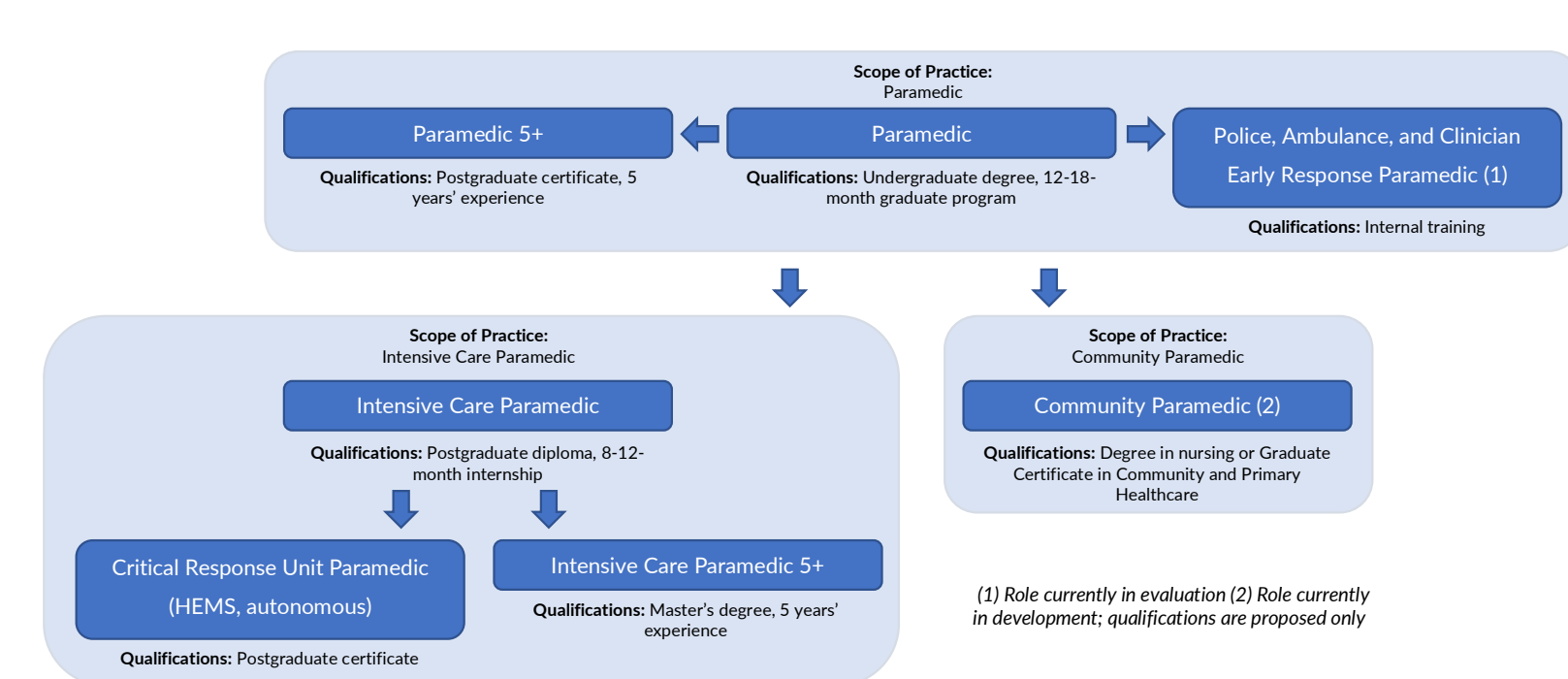
South Australia Ambulance Service



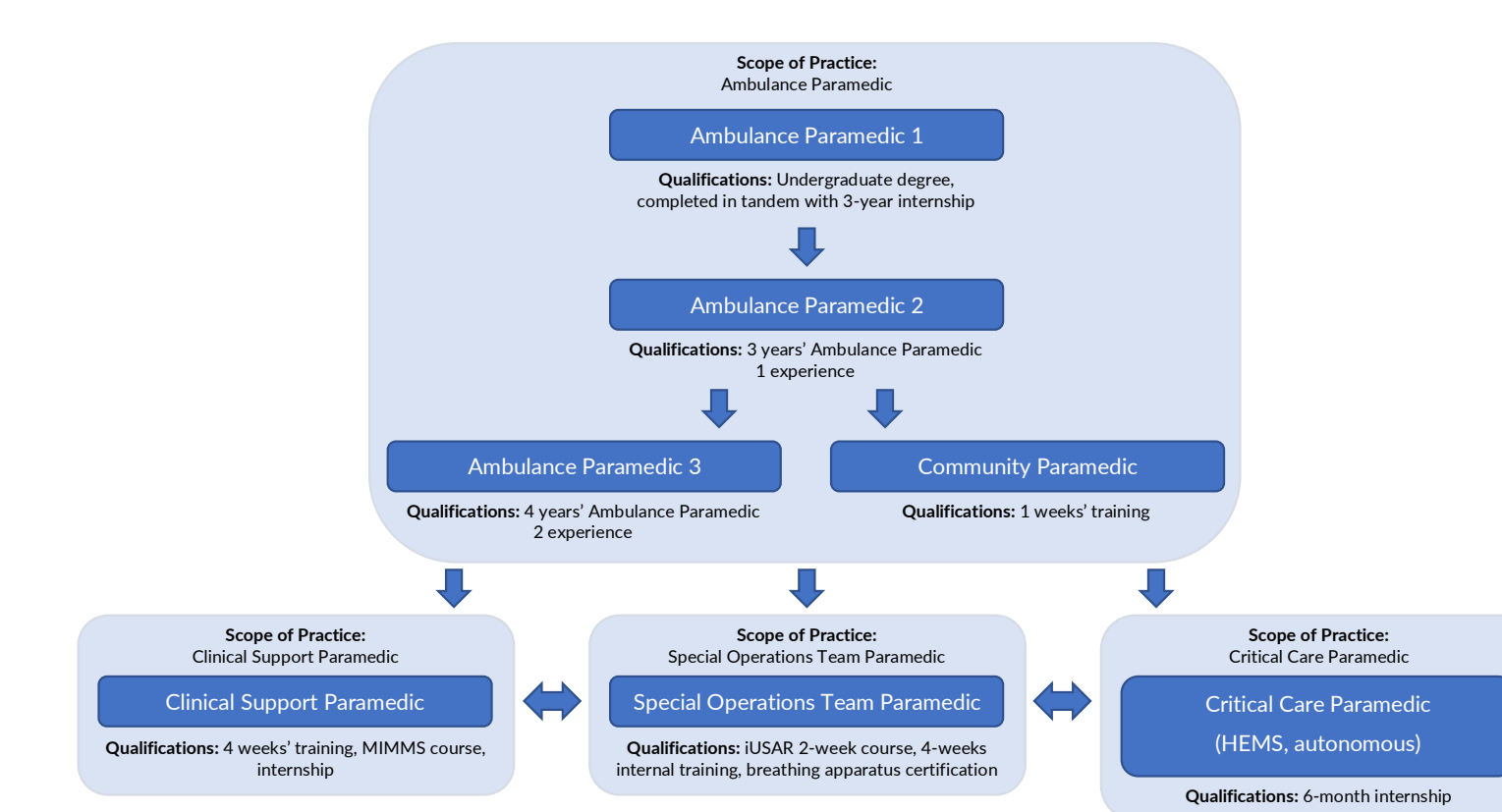
St John New Zealand



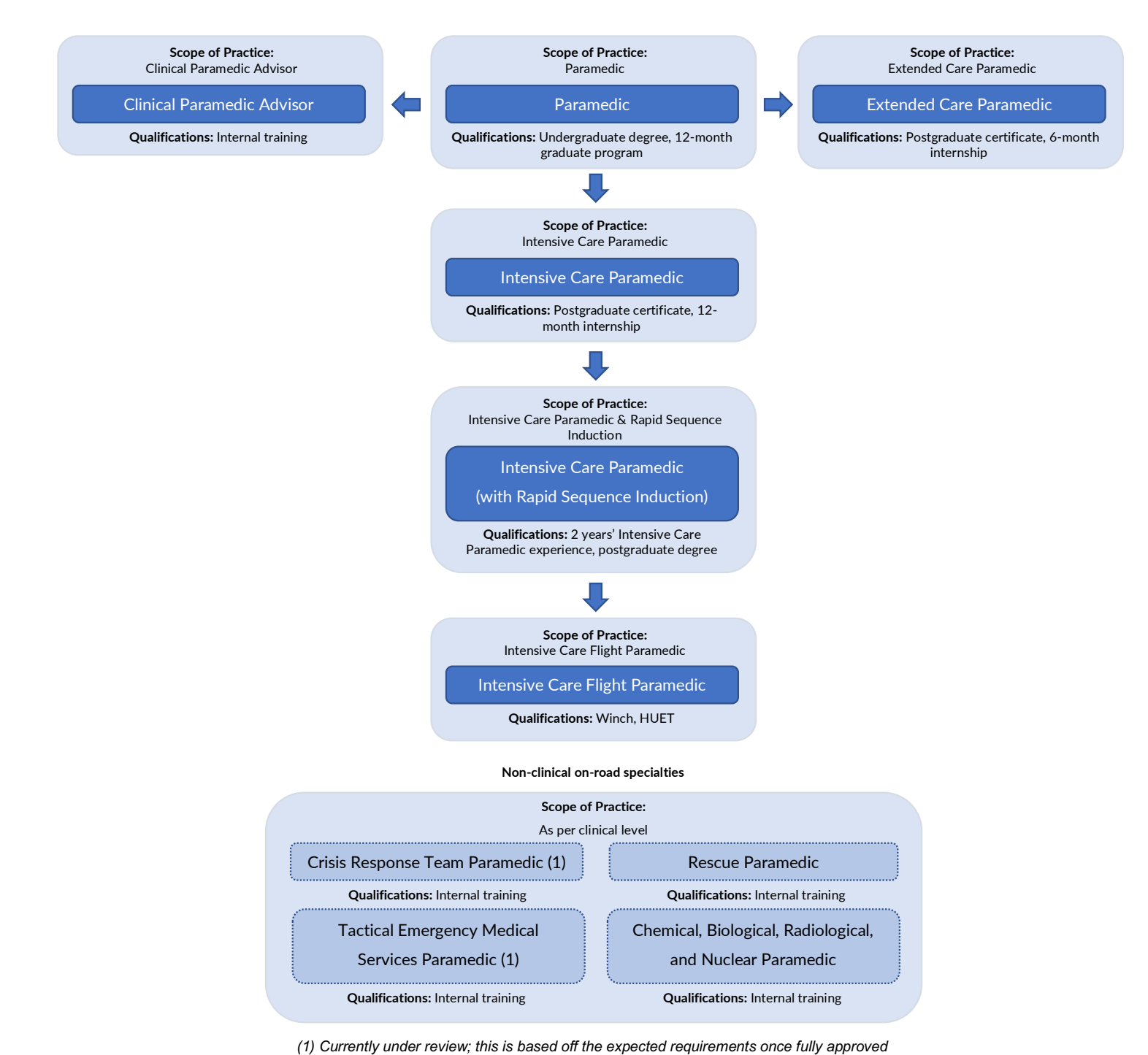
St John Northern Territory



St John Western Australia



Wellington Free Ambulance



Content verified by managers from each service. This summary only includes roles that are primarily on-road; primarily office-based roles (including teleconsultation) are excluded. Generally, all roles in preceding scopes of practice are available in later scopes of practice and have not been listed twice due to space. Flight team leadership here refers purely to clinical management. This only lists current application requirements; existing paramedics may have entered via previous pathways. For the full discussion, see Wilkinson-Stokes, M. (2021). A taxonomy of Australian and New Zealand paramedic clinical roles. *AJP*, 18. DOI: 10.33151/ajp.18.880 Updates made in October 2021. Figures reproduced with permission.